

What Shall We Do With The Drunken Sailor? - Instruction Sheet 1

Notes used in this tune:

This tune is in the E Dorian mode which has the same key signature as D major so all F and C notes are sharpened. E Dorian uses all the notes you find in D major but starting and ending on an E note.

D
D row
button 3
push

E
D row
button 3
pull

F sharp
D row
button 4
push

G
D row
button 4
pull

A
D row
button 5
push

B
D row
button 5
pull

C sharp
D row
button 6
pull

D
G row button 5 & D row
button 6
pull

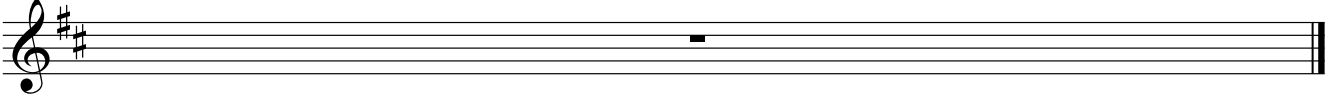
E
G row
button 5
pull

Examples of counting the different rhythms in this piece

"1 2 and 3 4 and 1 2 3 4

1 2 3 4 1 2 3 4 and"

What Shall We Do With The Drunken Sailor? - Instruction Sheet 2



Bass notes and chords used in this tune.
(buttons are numbered from chin end like the treble buttons):

- E = E bass note - button 2 inside row on the pull
- Em = E minor chord - button 1 inside row on the pull
- D = D bass note - button 2 outside row on the push
- d = D major chord - button 1 outside row on the push
- A = A bass note - button 2 outside row on the pull
- a = A major chord - button 1 outside row on the pull