

Octopus's Garden - for GCF melodeon

Richard Starkey

bellows directions >

left hand buttons O.R. 4 & 3

<

I.R. 2 & 1

>

O.R. 6 & 5

<

O.R. 4 & 3

>

O.R. 4 & 3

chords C

Am

F

G

C



right hand fingering

3 2 3 3 2 3 1 1 2 3 2 1 2 1

<

I.R. 2 & 1

Am

>

O.R. 6 & 5

F

<

O.R. 4 & 3

G

>

I.R. 2 & 1

E

Am

>

O.R. 1 & 2

G



>

O.R. 6 & 5

F

<

O.R. 4 & 3

G

>

O.R. 4 & 3

C



these two notes
are not part
of the tune -
I put them in
to fill up
the gap!

<

I.R. 2 & 1

Am

>

O.R. 6 & 5

F

<

O.R. 4 & 3

G

>

O.R. 4 & 3

C

O.R. 6 & 5

F

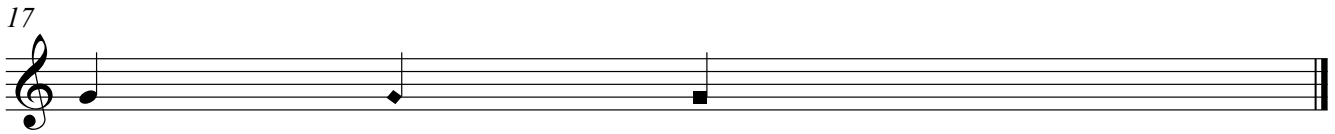
O.R. 4 & 3

C

I put these
two notes in
to make the
ending fuller



In my three-row music, notes on the inside row have a normal head, notes on the middle row have a diamond head and notes on the outside row have a square head.



Bellows direction:-

> = Push

< = Pull

left hand buttons (bass notes and chords):-

O.R. 4 & 3 = outside row, buttons 4 and 3 (where button 1 is nearest the chin end)

I.R. 2 & 1 = inside row, buttons 2 and 1